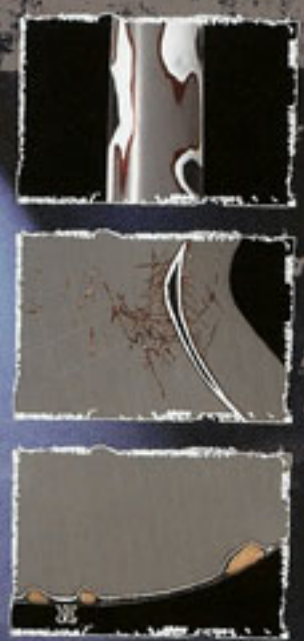




SIGNATURE Series



JAMES HETFIELD
Metallica

TRUCKSTER

- Body: Mahogany / Maple top
- Neck: Mahogany
- Finger Board: Rosewood
- Construction: Scale: Set 24.75"
- Tuners: Sperzel Locking Tuner
- Bridge / Hardware Color: TunePro Locking bridge / Satin Chrome
- Fret: 22 XJ
- PU (N): EMG 60, PU (BR): EMG 81
- Control: 2 vol, 1 tone, 3 way-toggle
- Color: APG (Aged Primer Grey)